

STATEMENT OF COMPLIANCE FOR THE CARRIAGE OF SOLID CARGOES IN BULK

No. 102417-V001-009



RINA No. 102417

Name of ship	RINA Number	Flag
SALAR	102417	Antigua and Barbuda
Port of Registry	IMO Number	Distinctive Number or Letters
ST.JOHN'S	8801125	V2OR4

Type of ship **Other than Bulk carrier**

THIS IS TO CERTIFY:

1. that the construction and equipment of the above-mentioned ship were found to comply with the provisions of the reg. II-2/54 SOLAS '74 or reg. II-2/19 SOLAS '74, as applicable, reg.VII/7-5 SOLAS'74 as amended by IMO Res. MSC.269(85), the International Maritime Solid Bulk Cargoes (IMSBC) Code, and
2. that the ship is suitable for the carriage of the solid bulk cargoes as specified on page 2 of this Statement subject to any provisions in the International Maritime Solid Bulk Cargoes (IMSBC) Code for individual cargoes also being complied with.

This Statement is valid until: **30 June 2024**

Issued at: **RIGA**

on: **05 June 2022**



This is an electronically signed document in accordance with IMO FAL.5/Circ.39 and does not require a handwritten signature. Validation and authentication of the paper printout may be obtained from <https://ecertificate.rina.org>

Serenoks Mihails

RINA SERVICES S.p.A.

SPACES IDENTIFIED ON HOLD PLAN BELOW

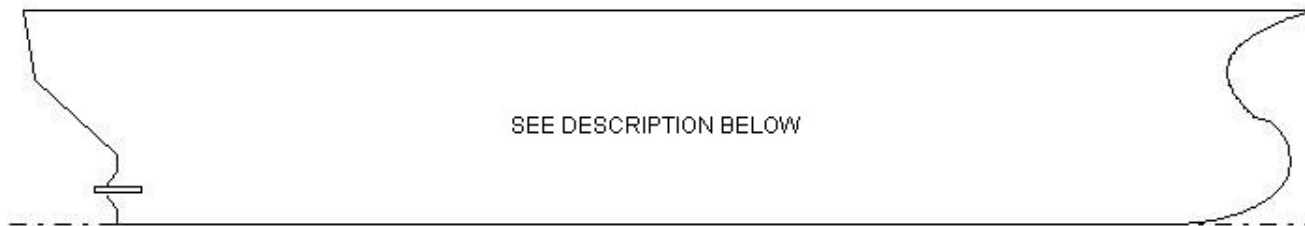
CARGOES		CARGO SPACES (*)		
		A	B	C
GROUP A	Cargoes, listed in Group A, which may liquefy, but having, when shipped, a moisture content not exceeding the "transportable moisture limit";	Y	-	-
GROUP B	Cargoes possessing chemical hazards	Y	-	-
GROUP C	Cargoes, listed in Group C, which are not liable to liquefy or to possess chemical hazards, having an angle of repose of not less than 30°;	Y	-	-

(*) Y : Allowed X : Not allowed

General note:

- The cargoes that may be carried are those for which the pertinent requirements in the "Record for the carriage of solid cargoes in bulk" n. 102417-R001-009-REC attached to the present Statement are complied with.
- For a cargo ship whose keel was laid after 1 September 1984 (1 February 1992, if tonnage < 500 GT) , for Group B cargoes belonging to classes 4.1 to 9 a Document of Compliance is also necessary
- All cargoes are to be loaded and carried according to the provisions contained in the ship's approved stability booklet/loading manual

CARGO SPACES (*)



Underdeck spaces

Spaces	Description of cargo spaces (**)
A	Cargo Hold
B	
C	

(**): see table below for possible additional notes/requirements for the carriage of specific cargoes

CARGOES	CLASS	SPECIAL REQUIREMENTS
RADIOACTIVE MATERIAL SURFACE CONTAMINATED OBJECTS (SCO-1), non-fissile or fissile-excepted, UN 2913	7	
RADIOACTIVE MATERIAL, LOW SPECIFIC ACTIVITY (LSA-1) non-fissile or fissile-excepted, UN 2912	7	
SAND, MINERAL CONCENTRATE, RADIOACTIVE MATERIAL, LOW SPECIFIC ACTIVITY (LSA-I) UN 2912	7 and MHB	
CHARCOAL	MHB	
LIME (UNSLAKED)	MHB	
MAGNESIA (UNSLAKED)	MHB	
MONOAMMONIUM PHOSPHATE (M.A.P.), MINERAL ENRICHED COATING	MHB	
MONOCALCIUMPHOSPHATE (MCP)	MHB	
SOLIDIFIED FUELS RECYCLED FROM PAPER AND PLASTICS	MHB	
FLUE DUST, CONTAINING LEAD AND ZINC	MHB	
PYRITES, CALCINED (Calcined Pyrites)	MHB	
VANADIUM ORE	MHB	
ALUMINA HYDRATE	MHB	
BROWN COAL BRIQUETTES	MHB	Notes 2, 6, 7, 10, 11, 12
COAL	MHB	Notes 2, 6, 7, 10, 11, 12
DIRECT REDUCED IRON (A) Briquettes, hot-moulded	MHB	Notes 1, 3, 8, 10
LINTED COTTON SEED	MHB	Note 12
METAL SULPHIDE CONCENTRATES	MHB	Notes 12, 13
PEAT MOSS	MHB	Note 12
PITCH PRILL	MHB	
SAWDUST	MHB	
SUGARCANE BIOMASS PELLETS	MHB	
TANKAGE	MHB	Note 10
WOODCHIPS	MHB	Note 14
WOOD PRODUCT - GENERAL	MHB	Notes 14, 15
WOOD TORREFIED with Angle of Repose equal or less than 30°	MHB	Notes 14, 15
WOOD TORREFIED with Angle of Repose more than 30°	MHB	Notes 9, 14, 15
AMORPHOUS SODIUM SILICATE LUMPS	MHB	
GRANULATED NICKEL MATTE (LESS THAN 2% MOISTURE CONTENT)	MHB	
COAL TAR PITCH	MHB	
CLINKER ASH, WET	MHB	
PETROLEUM COKE (calcined or uncalcined)	MHB	
BORIC ACID	MHB	
ZINC OXIDE ENRICHED FLUE DUST	MHB	
FLUORSPAR	MHB	
WOOD PELLETS NOT CONTAINING ADDITIVES AND/OR BINDERS with Angle of Repose equal or less than 30°	MHB (OH)	Notes 14, 15

WOOD PELLETS NOT CONTAINING ADDITIVES AND/OR BINDERS with Angle of Repose more than 30°	MHB (OH)	Notes 9, 14, 15
WOOD PELLETS CONTAINING ADDITIVES AND/OR BINDERS with Angle of Repose more than 30°	MHB (WF)	Notes 9, 14, 15
WOOD PELLETS CONTAINING ADDITIVES AND/OR BINDERS with Angle of Repose equal or less than 30°	MHB (WF)	Notes 14, 15
OLIVINE SAND		
ALFALFA		
CALCIUM NITRATE FERTILIZER		
CLAY		
FERROCHROME		
PEBBLES (sea)		
PELLETS (concentrates)		
POTASSIUM CHLORIDE		
POTASSIUM SULPHATE		
PUMICE		
QUARTZ		
IRON CONCENTRATE (pellet feed) (included in Mineral concentrates)		
LEAD AND ZINC CALCINES (mixed) (included in Mineral concentrates)		
LEAD AND ZINC MIDDINGS (included in Mineral concentrates)		
NICKEL ORE		
PENTAHYDRATE CRUDE (included in Mineral concentrates)		
PYRITIC ASHES (iron) (included in Mineral concentrates)		
PYRITIC CINDERS (included in Mineral concentrates)		
ZINC SINTER (included in Mineral concentrates)		
BAUXITE FINES		
COKE		
IRON ORE PELLETS		
LIMESTONE		
ILMENITE SAND		
ALUMINIUM FLUORIDE		
IRON AND STEEL SLAG AND ITS MIXTURE		
SCALE GENERATED FROM THE IRON AND STEEL MAKING PROCESS		
ZINC SLAG		
ANTIMONY ORE AND RESIDUE		
BARYTES		
BIOSLUDGE		
BORAX (PENTAHYDRATE CRUDE)		
BORAX, ANHYDROUS, crude or refined		
CEMENT		
CEMENT CLINKERS		
GRANULATED SLAG		

PERLITE ROCK		
PHOSPHATE ROCK		
PYROPHYLLITE		
QUARTZ SAND (included in SAND)		
QUARZITE		
RUTILE SAND		
SILICA SAND (included in SAND)		
SODA FELSPAR SAND (included in SAND)		
SODA ASH (Dense and light)		
IRON ORE		
LEAD ORE		
MAGNESIA (DEADBURNED)		
MAGNESITE, natural		
OLIVINE GRANULAR AND GRAVEL AGGREGATE PRODUCTS		
PIG IRON		
POTASH		
RASORITE (ANHYDROUS)		
SALT		
SALT CAKE		
SCRAP METAL		
SILICOMANGANESE (carbo-thermic)		
STONE CHIPPINGS		
SUGAR		
TACONITE PELLETS		
TALC		
UREA		Note 5
WHITE QUARTZ		
CEMENT COPPER (included in Mineral concentrates)		
COAL SLURRY		Note 5
COKE BREEZE		
COPPER CONCENTRATE (included in Mineral concentrates)		
FISH (IN BULK)		
FLY ASH, WET		
ILMENITE CLAY		
CARBORUNDUM		
COARSE IRON AND STEEL SLAG AND ITS MIXTURE		
CRUSHED CARBON ANODES		
GLASS CULLET		
FOAM GLASS GRAVEL		
ILMENITE (ROCK)		
MANGANESE COMPONENT FERROALLOY SLAG		
AMMONIUM SULPHATE		Note 5

CHAMOTTE		
CHROMITE ORE		
CRYOLITE		
DIAMMONIUM PHOSPHATE		Note 5
FERRONICKEL SLAG (granulated)		
FERROUS SULPHATE HEPTAHYDRATE		
FLY ASH, DRY		
FOUNDRY SAND (included in SAND)		
GRANULAR FERROUS SULPHATE		
LABRADORITE		
MAGNESIUM SULPHATE FERTILIZERS		Note 5
MONOAMMONIUM PHOSPHATE (M.A.P.)		
PEANUTS (in shell)		
PHOSPHATE (defluorinated)		
ZIRCONSAND		
GRAIN SCREENING PELLETS		
ALUMINA		
ALUMINA CALCINATED		
ALUMINA SILICA		
AMMONIUM NITRATE BASED FERTILIZER (non-hazardous) with Angle of Repose equal or less than 30°		Notes 1, 4, 10
AMMONIUM NITRATE BASED FERTILIZER (non-hazardous) with Angle of Repose more than 30°		Notes 1, 4, 9, 10
SEED CAKE AND OTHER RESIDUES OF PROCESSED OILY VEGETABLES		Note 12
SULPHUR (formed, solid)		
CHEMICAL GYPSUM		
BRUCITE		
CHLORITE		
CHOPPED RUBBER AND PLASTIC INSULATION		
CHROME PELLETS		
COARSE CHOPPED TYRES		
COLEMANITE		
COPPER GRANULES		
COPPER MATTE		
DISTILLERS DRIED GRAINS WITH SOLUBLES		
DOLOMITE		
FELSPAR LUMP		
FERROCHROME, exothermic		
FERROMANGANESE		
FERRONICKEL		
FERTILIZERS WITHOUT NITRATES (non-hazardous)		
GRANULATE TYRE RUBBER		

GYPSUM		
GYPSUM GRANULATED		
SPODUMENE (UPGRADED)		
SYNTHETIC CALCIUM FLUORIDE		
SYNTHETIC SILICON DIOXIDE		
TITANOMAGNETITE SAND		
ZINC AND LEAD CALCINES (mixed) (included in Mineral concentrates)		
ZINC AND LEAD MIDDINGS (included in Mineral concentrates)		
ZINC CONCENTRATE (included in Mineral concentrates)		
ZINC SLUDGE (included in Mineral concentrates)		
ZIRCON KYANITE CONCENTRATE		
SILICON SLAG		
CALCIUM FLUORIDE, CALCIUM SULPHATE, CALCIUM CARBONATE MIXTURE		
COPPER SLAG		
ILMENITE (UPGRADED)		
IRON OXIDE TECHNICAL		
MANGANESE ORE FINES		
SALT ROCK		
SEED CAKE (not hazardous)		
SULPHATE OF POTASH AND MAGNESIUM		
SUPERPHOSPHATE		Note 5
SUPERPHOSPHATE (triple, granular)		
IRON CONCENTRATE (included in Mineral concentrates)		
IRON CONCENTRATE (sinter feed) (included in Mineral concentrates)		
IRON ORE FINES		
IRON SMELTING BY PRODUCT		
LEAD CONCENTRATE (included in Mineral concentrates)		
LEAD ORE RESIDUE (included in Mineral concentrates)		
LEAD SILVER CONCENTRATE (included in Mineral concentrates)		
MANGANESE CONCENTRATE (included in Mineral concentrates)		
NEFELENE SYENITE (mineral) (included in Mineral concentrates)		
NICKEL CONCENTRATE (included in Mineral concentrates)		
PYRITES (included in Mineral concentrates)		
SAND, HEAVY MINERAL		
SILVER LEAD CONCENTRATE (included in Mineral concentrates)		
SLIG (iron ore) (included in Mineral concentrates)		
BAUXITE		
MATTE CONTAINING COPPER AND LEAD		
ALUMINA SILICA, pellets		
IRONSTONE		

MANGANESE ORE		
IRON SINTER		
MARBLE CHIPS		
POTASSIUM FELSPAR SAND (included in SAND)		
PYRITE (containing copper and iron)		
STAINLESS STEEL GRINDING DUST		
TAPIOCA		
VERMICULITE		

NOTES

1. The following electrical equipment in the cargo hold is to be isolated from electrical supply and to be secured against unintentional reconnection: all electrical equipment.
2. Means shall be provided for testing acidity of water in the bilge wells of the cargo hold.
3. A suitable detector for quantitative measurements of hydrogen, certified safe type for use in explosive atmosphere and capable of functioning in oxygen depleted environment is to be provided.
4. Stowage at least 3m distance to machinery space bulkhead, e.g. with a grain bulkhead barded or other means of separation.
5. In case that the cargo to be loaded has an angle of repose equal to or lower than 30°, it is the responsibility of the Master to assure that it shall be carried according to the provisions applicable to the stowage of grain cargoes (see Section 5, paragraph 5.4.3, of the Code).
6. A suitable detector for quantitative measurements of carbon monoxide is to be provided.
7. Electrical equipment in the cargo hold and adjacent enclosed spaces is to be suitable for use in a flammable and / or dusty atmosphere, or positively isolated.
8. Wire mesh guards shall be fitted over inlet and outlet ventilation openings.
9. The Master is responsible to check the actual value of angle of repose.
10. Suitable instruments for measuring the temperature in the cargo are to be provided. In case of portable temperature sensors the arrangement shall enable the measurements of temperature without entering the hold.
11. A suitable detector for quantitative measurements of methane is to be provided.
12. A suitable detectors for crew entering cargo and adjacent spaces, certified for use in explosive atmosphere for quantitative measurements of oxygen (0-21 % by volume) is to be provided.
13. A suitable detectors for crew entering cargo and adjacent spaces, certified for use in explosive atmosphere for quantitative measurements of toxic gases that may be given from the cargo is to be provided.
14. Oxygen meters are to be provided for crew entering cargo and adjacent enclosed spaces.
15. Carbon monoxide meters are to be provided for crew entering cargo and adjacent enclosed spaces.

ENDORSEMENT FOR ANNUAL SURVEYS

THIS IS TO CERTIFY: that the ship was found to comply with the relevant provisions of the International Maritime Solid Bulk Cargoes (IMSBC) Code.

Annual survey	Signature and seal
Place	
Date	
Annual survey	Signature and seal
Place	
Date	
Annual survey	Signature and seal
Place	
Date	
Annual survey	Signature and seal
Place	
Date	