

# STATEMENT OF COMPLIANCE FOR THE CARRIAGE OF SOLID CARGOES IN BULK

No. 99681-V009-008



RINA No. 99681

Name of ship	RINA Number	Flag
<b>GT VELA</b>	<b>99681</b>	<b>Antigua and Barbuda</b>
Port of Registry	IMO Number	Distinctive Number or Letters
<b>ST.JOHN'S</b>	<b>8912027</b>	<b>V2UE</b>

Type of ship **Other than Bulk carrier**

## THIS IS TO CERTIFY:

1. that the construction and equipment of the above-mentioned ship were found to comply with the provisions of the reg. II-2/54 SOLAS '74 or reg. II-2/19 SOLAS '74, as applicable, reg.VII/7-5 SOLAS'74 as amended by IMO Res. MSC.269(85), the International Maritime Solid Bulk Cargoes (IMSBC) Code, and
2. that the ship is suitable for the carriage of the solid bulk cargoes as specified on page 2 of this Statement subject to any provisions in the International Maritime Solid Bulk Cargoes (IMSBC) Code for individual cargoes also being complied with.

This Statement is valid until: **31 December 2026**

Issued at: **RIGA**

on: **27 August 2022**



This is an electronically signed document in accordance with IMO FAL.5/Circ.39 and does not require a handwritten signature. Validation and authentication of the paper printout may be obtained from <https://ecertificate.rina.org>

Serenoks Mihails

**RINA SERVICES S.p.A.**

**SPACES IDENTIFIED ON HOLD PLAN BELOW**

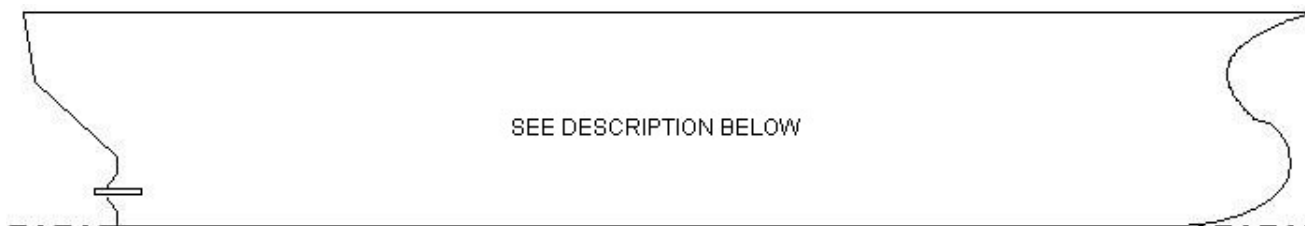
CARGOES		CARGO SPACES (*)		
		A	B	C
GROUP A	Cargoes, listed in Group A, which may liquefy, but having, when shipped, a moisture content not exceeding the "transportable moisture limit";	Y	-	-
GROUP B	Cargoes possessing chemical hazards	Y	-	-
GROUP C	Cargoes, listed in Group C, which are not liable to liquefy or to possess chemical hazards, having an angle of repose of not less than 30°;	Y	-	-

(\*) Y : Allowed X : Not allowed

General note:

- The cargoes that may be carried are those for which the pertinent requirements in the "Record for the carriage of solid cargoes in bulk" n. 99681-R001-008-R attached to the present Statement are complied with.
- For a cargo ship whose keel was laid after 1 September 1984 (1 February 1992, if tonnage < 500 GT) , for Group B cargoes belonging to classes 4.1 to 9 a Document of Compliance is also necessary
- All cargoes are to be loaded and carried according to the provisions contained in the ship's approved stability booklet/loading manual

CARGO SPACES (\*)



Underdeck spaces

Spaces	Description of cargo spaces (**)
A	Cargo Hold
B	
C	

(\*\*): see table below for possible additional notes/requirements for the carriage of specific cargoes

CARGOES	CLASS	SPECIAL REQUIREMENTS
SULPHUR UN 1350, GROUP B	4.1	5,10
SEED CAKE, containing vegetable oil UN 1386 (b) solvent extracted seeds, GROUP B	4.2	2,10
SEED CAKE UN 2217, GROUP B	4.2	2,10
IRON OXIDE, SPENT or IRON SPONGE, SPENT UN 1376, GROUP B	4.2	4,8
SEED CAKE, containing vegetable oil UN 1386 (b) mechanically expelled seeds , GROUP B	4.2	2,10
COPRA (dry) UN 1363, GROUP B	4.2	2,4
FERROUS METAL BORINGS, SHAVINGS, TURNINGS or CUTTINGS UN 2793, GROUP B	4.2	7
SEED CAKE, containing vegetable oil UN 1386 (a), GROUP B	4.2	2
LEAD NITRATE UN 1469, GROUP B	5.1	
ALUMINIUM NITRATE UN 1438, GROUP B	5.1	
CALCIUM NITRATE UN 1454, GROUP B	5.1	
SODIUM NITRATE UN 1498, GROUP B	5.1	
POTASSIUM NITRATE UN 1486, GROUP B	5.1	
AMMONIUM NITRATE UN 1942, GROUP C	5.1	1,2
SODIUM NITRATE AND POTASSIUM NITRATE MIXTURE UN 1499, GROUP B	5.1	
MAGNESIUM NITRATE UN 1474, GROUP B	5.1	
AMMONIUM NITRATE BASED FERTILIZER UN 2067, GROUP B	5.1	1,2
BARIUM NITRATE UN 1446, GROUP B	5.1	
RADIOACTIVE MATERIAL, LOW SPECIFIC ACTIVITY (LSA-I) UN 2912 , GROUP B	7	
SAND, MINERAL CONCENTRATE, RADIOACTIVE MATERIAL, LOW SPECIFIC ACTIVITY (LSA-I) UN 2912, GROUP A and B	7	
RADIOACTIVE MATERIAL, SURFACE CONTAMINATED OBJECTS (SCO-I) UN 2913, GROUP B	7	
METAL SULPHIDE CONCENTRATES, CORROSIVE UN 1759, GROUP A and B	8	
CASTOR BEANS UN 2969, GROUP B	9	
FISHMEAL (FISHSCRAP), STABILIZED UN 2216, GROUP B	9	2,4
AMMONIUM NITRATE BASED FERTILIZER UN 2071, B	9	2
METAL SULPHIDE CONCENTRATES, GROUP A and B	MHB	4,9
MONOAMMONIUM PHOSPHATE (M.A.P.), MINERAL ENRICHED COATING, GROUP B	MHB	
DIRECT REDUCED IRON (A) Briquettes, hot-moulded, GROUP B	MHB	2,4,5,6
MAGNESIA (UNSLAKED), GROUP B	MHB	
PYRITES, CALCINED, GROUP A and B	MHB	
PITCH PRILL, GROUP B	MHB	
TANKAGE, GROUP B	MHB	2
WOODCHIPS having a moisture content of 15% or more, GROUP B	MHB	4,11

WOODCHIPS having a moisture content of less than 15%, GROUP B	MHB	4,11
SOLIDIFIED FUELS RECYCLED FROM PAPER AND PLASTICS, GROUP B	MHB	4
WOOD PELLETS CONTAINING ADDITIVES AND/OR BINDERS, GROUP B	MHB	4,5,11,12,13
WOOD PELLETS NOT CONTAINING ANY ADDITIVES AND/OR BINDERS, GROUP B	MHB	4,11,12,13
WOOD PRODUCTS - GENERAL, GROUP B	MHB	4,11
BORIC ACID, GROUP B	MHB	
CHARCOAL, GROUP B	MHB	
COAL TAR PITCH, GROUP B	MHB	
LIME (UNSLAKED), GROUP B	MHB	
MONOCALCIUMPHOSPHATE (MCP), GROUP A and B	MHB	
WOOD TORREFIED, GROUP B	MHB	4,11,12,13
ALUMINA HYDRATE, GROUP A and B	MHB	
AMORPHOUS SODIUM SILICATE LUMPS, GROUP B	MHB	
CLINKER ASH, GROUP A and B	MHB	
FLUORSPAR, GROUP A and B	MHB	
GRANULATED NICKEL MATTE (LESS THAN 2% MOISTURE CONTENT) GROUP B	MHB	
PETROLEUM COKE (calcined or uncalcined), GROUP B	MHB	
SUGARCANE BIOMASS PELLETS, GROUP B	MHB	4,11,12,13
VANADIUM ORE, GROUP B	MHB	
LINTED COTTON SEED, GROUP B	MHB	4
PEAT MOSS, GROUP A and B	MHB	4
SAWDUST, GROUP B	MHB	
PHOSPHATE ROCK (calcined), GROUP C	N.A	
POTASH, GROUP C	N.A	
SALT ROCK, GROUP C	N.A	
ILMENITE (ROCK),GROUP C	N.A	
IRON AND STEEL SLAG AND ITS MIXTURE, GROUP A	N.A	
IRON SMELTING BY-PRODUCTS, GROUP C	N.A	
ALUMINA SILICA, GROUP C	N.A	
ALUMINA, CALCINED, GROUP C	N.A	
CEMENT, GROUP C	N.A	
CHAMOTTE, GROUP C	N.A	
ALUMINA SILICA, pellets, GROUP C	N.A	
CLAY, GROUP C	N.A	
TACONITE PELLETS, GROUP C	N.A	
ZIRCON KYANITE CONCENTRATE, GROUP A	N.A	
SCRAP METAL, GROUP C	N.A	
STONE CHIPPINGS, GROUP C	N.A	
SUPERPHOSPHATE (triple granular), GROUP C	N.A	

ALFALFA, GROUP C	N.A	
CEMENT CLINKERS, GROUP C	N.A	
COARSE IRON AND STEEL SLAG AND ITS MIXTURE, GROUP C	N.A	
ALUMINA, GROUP C	N.A	
COLEMANITE, GROUP C	N.A	
CRUSHED CARBON ANODES, GROUP C	N.A	
CRYOLITE, GROUP C	N.A	
FISH (IN BULK), GROUP A	N.A	
GRANULATED SLAG, GROUP C	N.A	
IRON OXIDE TECHNICAL, GROUP A	N.A	
OLIVINE GRANULAR AND GRAVEL AGGREGATE PRODUCTS, GROUP C	N.A	
MAGNESIUM SULPHATE FERTILIZERS, GROUP C	N.A	
RUTILE SAND, GROUP C	N.A	
SALT CAKE, GROUP C	N.A	
SCALE GENERATED FROM THE IRON AND STEEL MAKING PROCESS, GROUP A	N.A	
SILICOMANGANESE (carbo-thermic), GROUP C	N.A	
SILICON SLAG, GROUP C	N.A	
SULPHATE OF POTASH AND MAGNESIUM, GROUP C	N.A	
CARBORUNDUM, GROUP C	N.A	
CHEMICAL GYPSUM, group A	N.A	
FELSPAR LUMP, GROUP C	N.A	
FERROCHROME, GROUP C	N.A	
ANTIMONY ORE AND RESIDUE, GROUP C	N.A	
AMMONIUM NITRATE BASED FERTILIZER (non-hazardous) (CCC.1/CircA to be considered), GROUP C	N.A	
AMMONIUM SULPHATE, GROUP C	N.A	
BIOSLUDGE, GROUP C	N.A	
DOLOMITE, GROUP C	N.A	
IRON SINTER, GROUP C	N.A	
LABRADORITE, GROUP C	N.A	
BARYTES, GROUP C	N.A	
BAUXITE (CCC.1/Circ.2/Rev.1 to be considered), GROUP C	N.A	
CHOPPED RUBBER AND PLASTIC INSULATION, GROUP C	N.A	
FLY ASH, WET, GROUP A	N.A	
GRANULAR FERROUS SULPHATE, GROUP C	N.A	
ILMENITE (UPGRADED), GROUP A	N.A	
ILMENITE CLAY, GROUP A	N.A	
ILMENITE SAND, GROUP A or C	N.A	
IRON ORE, GROUP C	N.A	
PYROPHYLLITE, GROUP C	N.A	
SODA ASH, GROUP C	N.A	

SPODUMENE(UPGRADED), GROUP A	N.A	
SUGAR, GROUP C	N.A	
SUPERPHOSPHATE, GROUP C	N.A	
TAPIOCA, C	N.A	
VERMICULITE, GROUP C	N.A	
ZINC SLAG, GROUP A	N.A	
CHROME PELLETS, GROUP C	N.A	
CHROMITE ORE, GROUP C	N.A	
PEBBLES (sea), GROUP C	N.A	
PELLETS (concentrates), GROUP C	N.A	
SEED CAKE (non-hazardous), GROUP C	N.A	
SULPHUR (formed, solid), GROUP C	N.A	4
SYNTHETIC SIUCON DIOXIDE, GROUP A	N.A	
ZIRCON SAND, GROUP C	N.A	
ALUMINIUM FLUORIDE, GROUP A	N.A	
BORAX (PENTAHYDRATE CRUDE), GROUP C	N.A	
BORAX, ANHYDROUS (crude or refined), GROUP C	N.A	
CALCIUM NITRATE FERTILIZER, GROUP C	N.A	
COKE, GROUP C	N.A	
COKE BREEZE, GROUP A	N.A	
COPPER GRANULES, GROUP C	N.A	
COPPER MATTE, GROUP C	N.A	
DISTILLERS DRIED GRAINS WITH SOLUBLES, GROUP C	N.A	
NICKEL ORE, GROUP A	N.A	
PEANUTS (in shell), GROUP C	N.A	
FERROMANGANESE, GROUP C	N.A	
FERRO NICKEL, GROUP C	N.A	
FLY ASH, DRY, GROUP C	N.A	
MAGNESIA (DEADBURNED), GROUP C	N.A	
MANGANESE COMPONENT FERROALLOY SLAG, GROUP C	N.A	
MANGANESE ORE, GROUP C	N.A	
MANGANESE ORE FINES, GROUP A	N.A	
MINERAL CONCENTRATES, GROUP A	N.A	
MONOAMMONIUM PHOSPHATE (M.A.P.), GROUP C	N.A	
OLIVINE SAND, GROUP A	N.A	
PHOSPHATE (defluorinated), GROUP C	N.A	
PHOSPHATE ROCK (uncalcined), GROUP C	N.A	
PIG IRON, GROUP C	N.A	
POTASSIUM SULPHATE, GROUP C	N.A	
PYRITE (containing copper and iron), GROUP C	N.A	
RASORITE (ANHYDROUS), GROUP C	N.A	
SALT, GROUP C	N.A	

LEAD ORE, GROUP C	N.A	
LIMESTONE, GROUP C	N.A	
PERLITE ROCK, GROUP C	N.A	
POTASSIUM CHLORIDE, GROUP C	N.A	
PUMICE, GROUP C	N.A	
QUARTZ, GROUP C	N.A	
QUARTZITE, GROUP C	N.A	
SAND, GROUP C	N.A	
WHITE QUARTZ, GROUP C	N.A	
MARBLE CHIPS, GROUP C	N.A	
TALC, GROUP C	N.A	
STAINLESS STEEL GRINDING DUST, GROUP C	N.A	
SYNTHETIC CALCIUM FLUORIDE, GROUP A	N.A	
GRAIN SCREENING PELLETS, GROUP C	N.A	
IRON ORE FINES, GROUP A	N.A	
IRON ORE PELLETS, GROUP C	N.A	
UREA, GROUP C	N.A	
TITANOMAGNETITE SAND, GROUP A	N.A	
COAL SLURRY, GROUP A	N.A	3
COARSE CHOPPED TYRES, GROUP C	N.A	
COPPER SLAG, GROUP A	N.A	
DIAMMONIUM PHOSPHATE (D.A.P.) GROUP C	N.A	
FERROUS SULPHATE HEPTAHYDRATE, GROUP C	N.A	
FERTILIZERS WITHOUT NITRATES, GROUP C	N.A	
FOAM GLASS GRAVEL, GROUP C	N.A	
GLASS CULLET, GROUP C	N.A	
GRANULATED TYRE RUBBER, GROUP C	N.A	
GYPSUM, GROUP C	N.A	
SAND, HEAVY MINERAL, GROUP A	N.A	
FERROCHROME, exothermic, GROUP C	N.A	
IRONSTONE, GROUP C	N.A	
GYPSUM GRANULATED, GROUP C	N.A	

## NOTES

- 1 Prior to loading, fuel tanks situated under the cargo spaces shall be pressure tested to ensure that there is no leakage of manholes and piping systems leading to the tanks.
- 2 Suitable instruments for measuring the temperature in the cargo are to be provided. In case of portable temperature sensors the arrangement shall enable the measurement of temperature without entering the hold.
- 3 A suitable detector for quantitative measurements of methane is to be provided.
- 4 A suitable detector for quantitative measurements of oxygen (0 - 21 % by volume) is to be provided.
- 5 The following electrical equipment in the cargo space(s) is to be isolated from the electrical supply and to be secured against unintentional reconnection (refer to the List of Equipment): ventilation fans
- 6 A suitable detector for quantitative measurements of hydrogen is to be provided.
- 7 Suitable instruments for measuring the surface temperature of the cargo are to be provided. In case of portable temperature sensors the arrangement shall enable the measurement of temperature without entering the hold.
- 8 A suitable detector for quantitative measurements of hydrogen cyanide is to be provided.
- 9 A suitable detector for measurements of toxic gases that may be given off from the cargo is to be provided.
- 10 Spark arresting screens shall be fitted to all ventilation openings on deck.
- 11 Oxygen meters are to be provided for crew entering cargo and adjacent enclosed spaces.
- 12 A suitable detector for quantitative measurements of carbon monoxide is to be provided.
- 13 Carbon monoxide meters are to be provided for crew entering cargo and adjacent enclosed spaces.



**ENDORSEMENT FOR ANNUAL SURVEYS**

THIS IS TO CERTIFY: that the ship was found to comply with the relevant provisions of the International Maritime Solid Bulk Cargoes (IMSBC) Code.

Annual survey	Signature and seal
Place	
Date	
Annual survey	Signature and seal
Place	
Date	
Annual survey	Signature and seal
Place	
Date	
Annual survey	Signature and seal
Place	
Date	